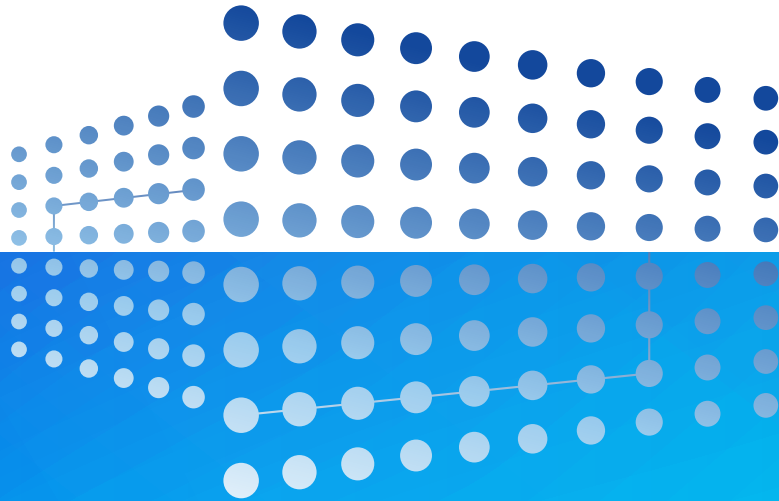


NEWATER  
HOUSE

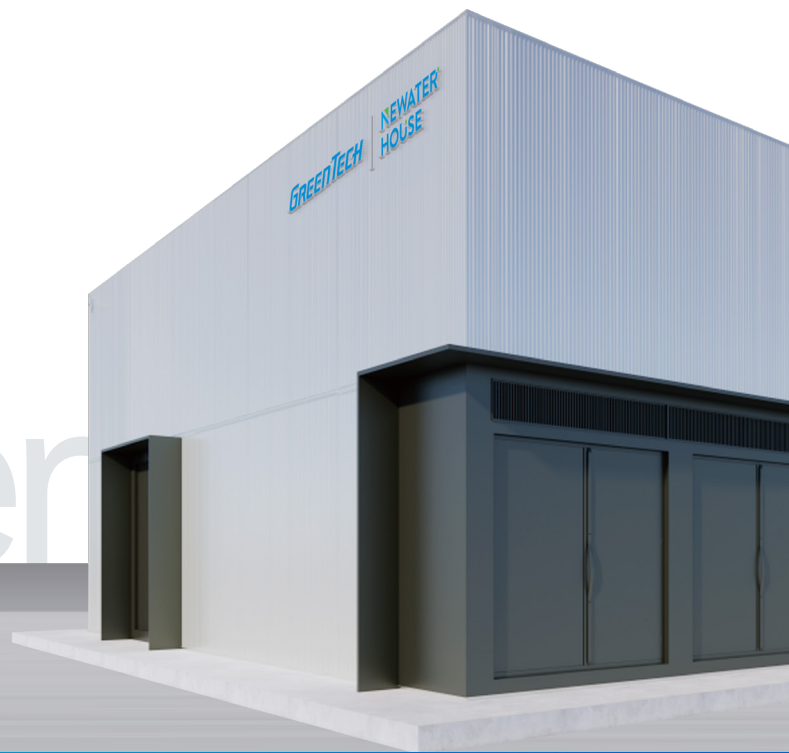


# Newater House<sup>®</sup> 2.0

**GREENTECH**

Intelligent Water Purification Unit,  
High-Efficiency, Low-Cost New  
Water Production Innovation

# Newwater



## OVERVIEW

Newwater House fundamentally revolutionizes traditional water plant construction by adopting an industrial product mindset. Using our proprietary WaterRobot® AI Agent Operations Platform, we seamlessly integrate all equipment, facilities, building, and structures into a cohesive design. The entire system is prefabricated, debugged, and trial-operated in the Newwater House Super Factory and delivered as a complete, intelligent unit, ready for quick assembly at the user's installation site.

Drawing from the extensive data and experience gained from more than 100 projects over 20 years, GreenTech has distilled its expertise in water plant design, equipment manufacturing, engineering construction, and operation management into the products, Newwater House.

Newwater House offer automated, safe and efficient management to deliver high-quality water for industrial enterprises, parks and municipality. This solution addresses water shortages, environmental capacity issues, water safety, and high costs.



# House 2.0

## APPLICATIONS

Newater House provides high-quality water for industrial enterprises, industrial parks and Municipality

### Industrial Enterprises

**Water Supply:** Conventional water\*/Non-conventional water\*\*→Treated by Newater House→High-quality industrial water supply

**Recycling:** Wastewater meeting the discharge standards within/outside the factory→Treated by Newater House→High-quality industrial reclaimed water

### Industrial Parks

**Water Supply:** Conventional water/Non-conventional water→Treated by Newater House→High-quality industrial water supply

**Recycling:** Wastewater meeting the discharge standards within parks→Treated by Newater House→High-quality industrial reclaimed water

### Municipality

**Water Supply:** Conventional water/Non-conventional water→Treated by Newater House→High-quality drinking water/High-quality industrial water supply/Water source replenishment

**Recycling:** Wastewater meeting the discharge standards in Municipality→Treated by Newater House→High-quality reclaimed water/Water source replenishment

\* **Conventional water** : Reservoir water, Groundwater, River water, Lake water

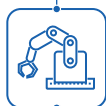
**Non-conventional water** : Waster water, Mine water, Brackish water, Seawater

# ADVANTAGES



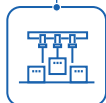
## Modular Design

- Standard 40ft modules with highly integrated design, saving 80% of the land area



## Industrialized Production

- Factory assembly line for production, commissioning, trial operation, and final acceptance, with high-quality strict control



## Rapid Installation and Delivery

- On-site assembly construction, quick installation and delivery, plug-and-play, water production capacity ranges from 2,000 to 5,000 m<sup>3</sup>/d., saving 80% of delivery time



## AI Agent Operation

- The multimodal management model of the water plant integrates the DeepSeek large model, achieving unattended, safe and efficient operation, with a reduction of 80% in maintenance personnel



## 4S Professional Services

- Build a new O&M model combining "AI Agents + 4S On-Site Service", integrating online smart operations with offline professional, real-time, and efficient maintenance services.





## PRODUCT SERIES

Product Name	Model	Standard Water Production m³/d	Dimensions m(l*w*h)	Footprint m²	Number of Modules (Excluding Water Tank)	Weight T	Installed Power kW	Color Appearance
Newater House Water Supply/ Reclaimed Water Series Products (Industrial Enterprises) (Industrial Parks) (Municipality)	NWHUR2.0-RO-J-X200-1/3	5000	25×13×6.5	325	12	130	~630	Traffic White Traffic Grey
	NWHUR2.0-RO-J-X400-1/3	10000	25×21×6.5	525	20	200	~1100	
	NWHUR2.0-RO-J-X600-1/3	15000	25×28×6.5	700	26	280	~1550	
	NWHUR2.0-RO-J-X800-1/3	20000	50×21×6.5	1050	36	350	~2000	
Model Description:	NWH	UR	2.0	RO-J-X200-1/3				
	Abbreviation for Newater House modular product series	Ultrafiltration & Reverse Osmosis process	Second-generation product	Reverse Osmosis (core technology) water treatment equipment, using spiral-wound membrane elements, with a production capacity of 200 m³/h, a single-pass design with a three-stage configuration				

## OPERATION CONDITIONS

Water Source: ..... Surface water/ Groundwater/ Wastewater treatment plant effluent

Power Supply Type: ..... TN-S

Control Power Source: ..... AC220V/DC24V

Power Source for Operation: ..... AC380V (±10%)/50Hz or 60Hz

**Note:** The parameters listed in this table are for general requirements; for operation under other special conditions, please contact us.

## PERFORMANCE PARAMETERS

Water Production: ..... 5000m<sup>3</sup>/d

Salt Removal Rate: ..... ≥97%

Recovery Rate: ..... ~75%

Permeate Water COD<sub>Mn</sub>: ..... ≤3 mg/L

Permeate Water TDS<sup>(1)(2)</sup>: ..... ≤100 mg/L

Operating Pressure: ..... ≤16bar

**Note<sup>(1)</sup>:** This parameter is better than the requirements of the World Health Organization "Drinking Water Quality Standards."

**Note<sup>(2)</sup>:** This parameter is better than the GB/T 1576-2018 "Water Quality for Industrial Boilers" softened water standard, and better than the GB/T 19923-2005 "Urban Wastewater Reuse - Industrial Water Quality" boiler feed water and process and product water quality standards.

**Explanation**

1. Other scales can be modularly extended according to demand;
2. Based on the actual influent quality conditions of the project, it may be necessary to match with other pre-treatment modules provided by GreenTech.

# WaterRobot® AI Agent

## AI Intelligent Operation Management Platform

The AI Intelligent Operation Management Platform, built on the DeepSeek-R1 inference model, integrates proprietary process, visual, and auditory models with extensive water treatment design, technical, and operational data. It enables end-to-end intelligent management of water treatment processes, achieving unmanned, safe, and highly efficient operations.

## Enabling Unmanned, Safe, and Efficient Water Plant Operations

### ■ Unmanned Operation:

A multi-modal integrated architecture optimizes processes, enables autonomous monitoring, predicts failures, and supports maintenance decisions—with over 90% recognition accuracy, replacing manual inspections and operational adjustments.

### ■ Autonomous Agent Operation:

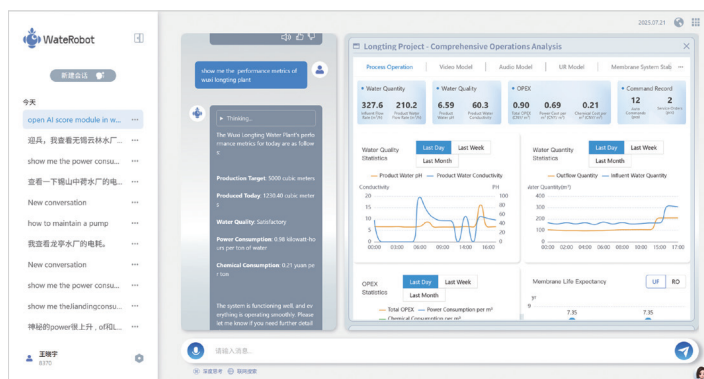
Generates 12 types of standard reports (e.g., cost analysis, equipment maintenance, operational performance) on demand, providing data-driven decision support for stable and efficient operations.

### ■ Intelligent Interactive Consultation:

As an AI agent, WaterRobot® enables human-machine interaction, autonomously accessing SCADA systems, digital twin platforms, and other operational systems to deliver real-time visualized data and feedback.

### ■ Zero-Barrier Operation:

Plug-and-play functionality with natural language interaction, while retaining traditional configuration interfaces to meet ISO 9001 safety and compliance requirements.



## Improving Efficiency & Reducing Costs

In Wuxi Regional Operations Center, 5 decentralized water plants have achieved full-scope intelligent management. The deployment of WaterRobot® AI Agent led to 58% reduction in operational staff, 12.7% decrease in energy consumption and a new O&M model combining "AI Agents + 4S On-Site Service", integrating online smart operations with offline professional, real-time, and efficient maintenance services.

## SERVICES

### Newater House provides online and offline (O2O) supporting services

#### Online:

The AI Intelligent Operation Management Platform, built on the DeepSeek-R1 inference model, integrates proprietary process, visual, and auditory models with extensive water treatment design, technical, and operational data. It enables end-to-end intelligent management of water treatment processes, achieving unmanned, safe, and highly efficient operations.

#### Offline:

Through a professional offline team in our 4S Service Center, we provide on-site services such as preventive periodic maintenance, membrane system cleaning, and routine chemical replenishment, achieving professional, real-time, and efficient operation and management services.

• Ensure Water Quality

• Ensure Water Production

• Ensure CAPEX

• Ensure OPEX



# PRACTICAL CASES



PCB Electronics & Thermal Power

## • Wuxi Anzhen Newater House

**Product Series:** Newater House Water Supply/Reclaimed Water Series Products in Industrial Parks

**Users:** Solar PV cell manufacturers

**Capacity:** 5,000 m<sup>3</sup>/d

## • Wuxi Longting Newater House, Wuxi Xishan Reclaimed Water Project

**Product Series:** Newater House Water Supply/Reclaimed Water Series Products in Industrial Parks

**Users:** Tripod Technology, Gul Technologies, Tongmeng Electronics

**Capacity:** 25,000 m<sup>3</sup>/d



Photovoltaic New Energy & Semiconductor Industry



PCB Electronics Industry

## • Tangshan Nanpu Recycled Water Project

**Product Series:** Newater House Water Supply/Reclaimed Water Series Products in Industrial Parks

**Users:** Tangshan Sanyou Group

**Capacity:** 87,000 m<sup>3</sup>/d

## • Wuxi Tripod Newater House

**Product Series:** Newater House Water Supply/Reclaimed Water Series Products in Industrial Enterprises

**Users:** Tripod Technology

**Capacity:** 2,500 m<sup>3</sup>/d



Chlor-alkali & Chemical Fiber Industry

## GreenTech Environmental Co. Ltd.

---

Founded in 2004, GreenTech Environmental Co., Ltd, is a national high-tech enterprise listed on the Shanghai Stock Exchange STAR Market. GreenTech focuses on advanced water treatment and waste -to -resources utilization, providing its customers with full lifecycle solutions through investment, construction, operation, and service. GreenTech is dedicated to solving the world's water pollution, water scarcity and water security issues by water reclamation.

Stock code on SSE STAR Market: 688466

---

**Address:** 16th Floor, Tower A, Motorola Building, No. 1, Wangjing East Road, Chaoyang District, Beijing

**Post code:** 100102

**Tel:** +86-10-6439-9965

**Fax:** +86-10-6439-2202

**Email:** [info@greentech.com.cn](mailto:info@greentech.com.cn)

**Website:** [www.greentech.com.cn](http://www.greentech.com.cn)

